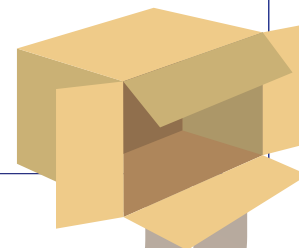




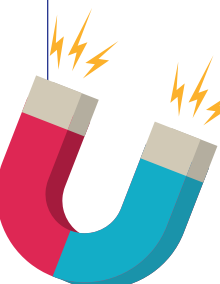
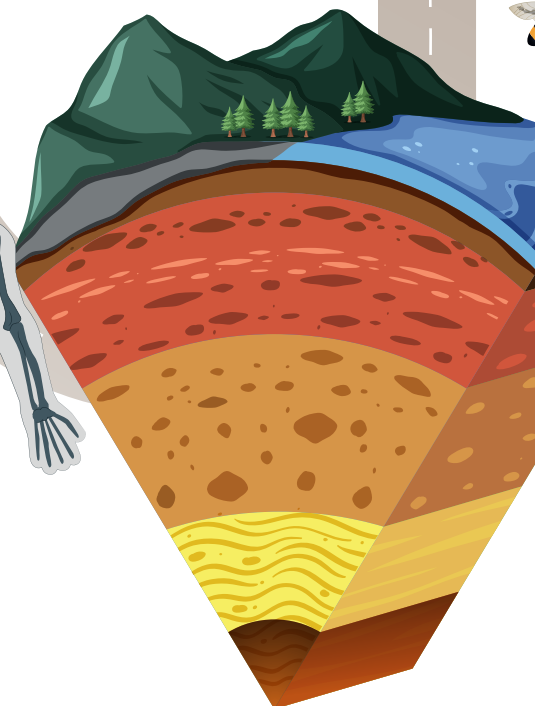
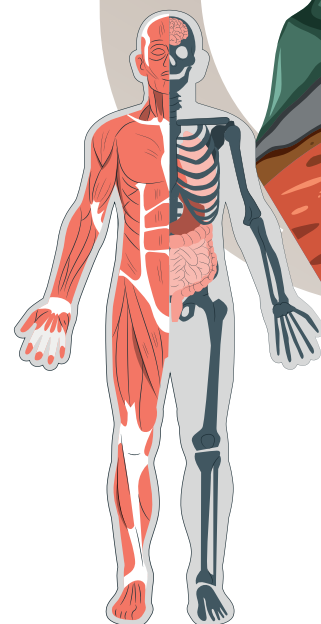
KS1 Year 1 and 2

- Which sense is the most useful?
- How might we know what season it is?
- What is needed for animals to survive?
- What is the best material to create a floating mode of transport?
- Why don't polar bears live in the desert?
- Why is it useful to know which plants are in our local area?
- Who's the healthiest person in the world?
- Are all animals the same?
- What do animals eat?
- Can a box be made from any material?
- How do plants grow from a seed or bulb?
- How might we know what season it is?



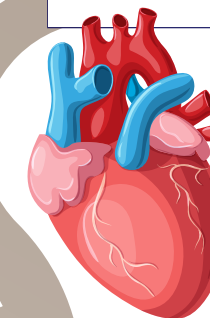
LKS2 Year 3 and 4

- What might happen if there were no plants?
- If we cannot see electricity, how do we know it is there?
- Why are bees important to the survival of other living things?
- How do we hear sound?
- How can the actions of humans affect living things?
- What can rocks tell us?
- How do states of matter matter?
- How do magnets work?
- How does light affect what we see?
- How do our bodies move and function?



UKS2 Year 5 and 6

- Do we need the sun to tell the time?
- How does light travel?
- How do plants and animals reproduce?
- Are humans animals?
- How can we make forces work for us?
- What makes a change irreversible?
- How small can an animal be?
- How can you make bulbs brighter?
- Will humans ever stop evolving?
- Why does our heart rate increase when we exercise?



EYFS Nursery and Reception

- I wonder who I will become?
- I wonder what is important to my community?
- I wonder who shares our home?
- I wonder how the world needs me?
- I wonder who shares our world?

